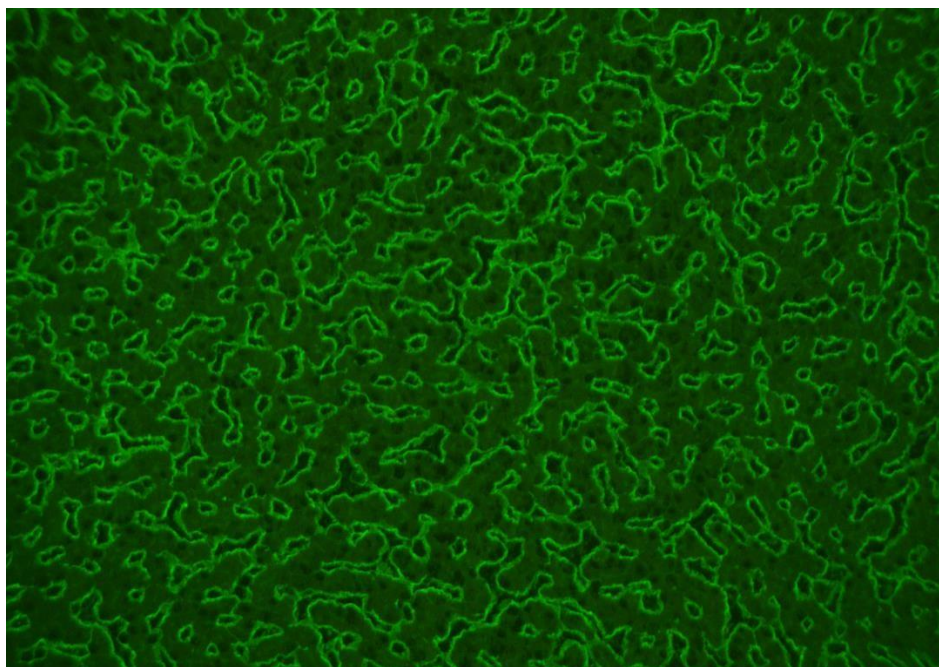


ANTI-ENDOMYSIUM ANTIBODIES-ML (AEA-ML) – MONKEY LIVER

Test kit for the qualitative detection of anti-endomysium IgA antibodies (AEA) in human serum as an aid in the diagnosis of celiac disease in the general population. The device is for manual use. For in vitro professional use in the clinical laboratory only.

For best results, the slides should be read immediately. Select reading fields in the inner part of the tissue section. Fluorescent intensity in the tissue edge is not representative of the slide preparation. All sera showing fluorescence staining of the vessels of the liver, called the sinusoids, at the recommended dilution should be considered positive. When none of the above specific stainings are observed, the result should be considered negative for these autoantibodies.

**Positive
pattern:**



**Negative
pattern:**

