

# Carefulness and commitment

BioSystems  
imLD

Fluorescence Microscope

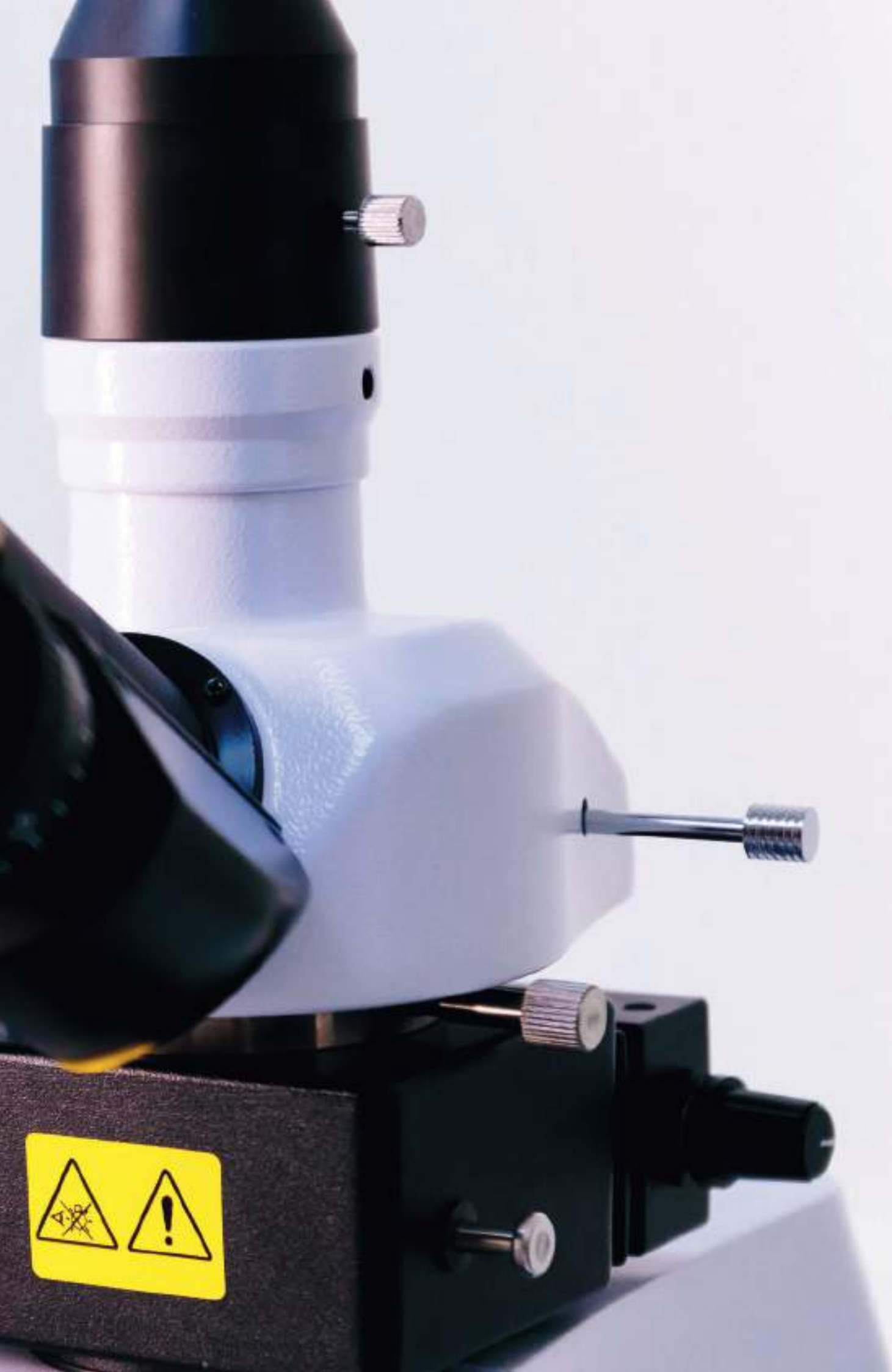
Clinical analysis - Autoimmunity

human - centred biotech

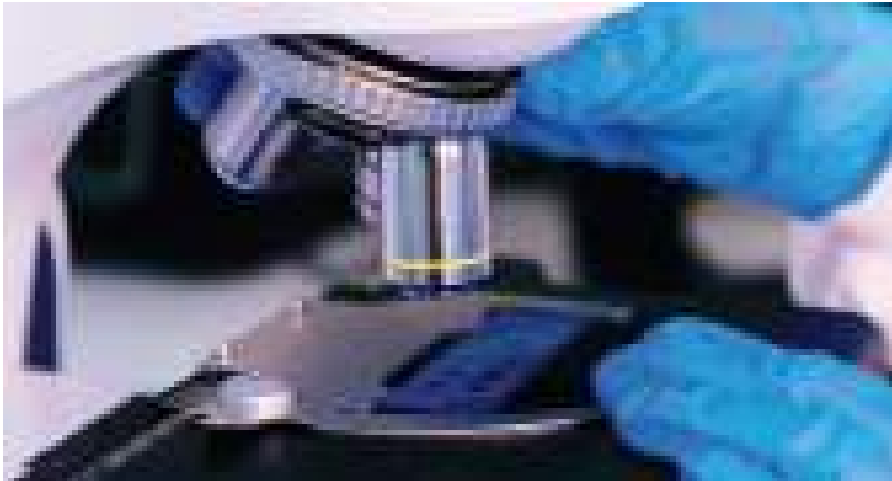


Years of experience developing  
our own fluorescence module  
adapted to our kits.





# Tailor-made visualisation



## Timesaving design

A long-lasting system and timesaving workflow on your daily routine are guaranteed by this reliable and easily operated optical microscope, combined with its robust optical system, constant LED light over all its lifetime and steady mechanics.



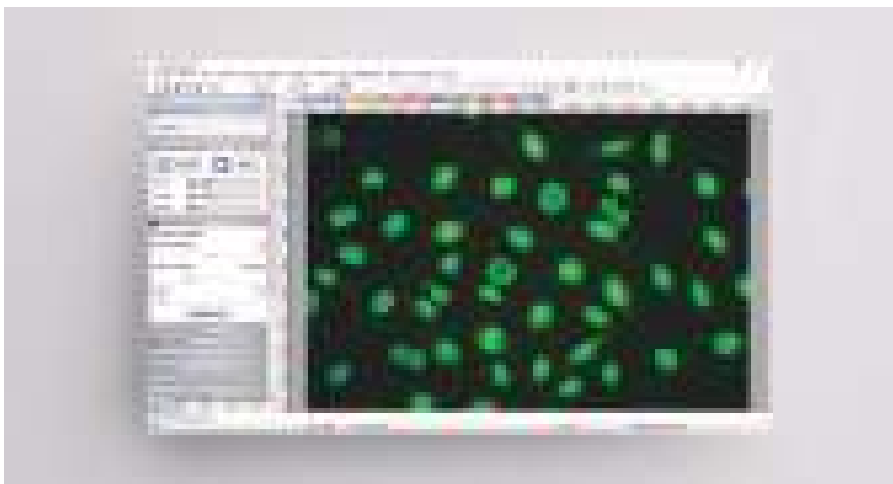
## Built for you

We assure quality and functionality. Make visualisation and recognition of cell or tissue patterns easier with our customised in-house built fluorescent module that fits your IIF assay reagents.



## We care about you

Saving effort and energy in demanding laboratory daily routines is a must. Let us provide you with the new iCare function that will automatically switch off the optical light when you are not using it.

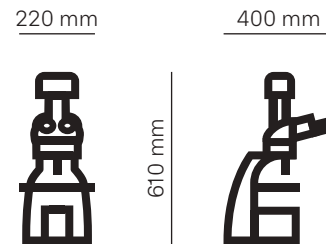


## Enhance your life

Visualise your preparations on the screen without delay allowing you to acquire high resolution pictures, correcting light exposition settings and comparing easily different preparations is now achievable with the high-speed camera and the user-friendly camera software.

# Technical Specifications

## Dimensions



## Highlights

- Trinocular head and EWF 10x22 mm paired eyepiece.
- Optical system infinity-corrected plan objectives (10x/0.25, 20x/0.40, 40x/0.65 and 100x/1.25).
- NeoLED 3 W, with brightness control.
- High power blue LED fluorescence light (470-480 nm).
- Fluorescence FITC filters.
- Automatic light switch-off thanks to the iCare function.
- High speed camera: with sCMOS Sony sensor and high speed USB 3.0 connection.
- Intuitive and user-friendly software.

## Item

imLD (optical microscope, fluorescence module, trinocular head)  
 Trinocular head  
 Digital camera  
 Fluorescence module  
 10x/0.25 objective  
 20x/0.40 objective  
 40x/0.65 objective  
 100x/1.25 objective\*

## Code

84201  
 AC17455  
 AC17454  
 AC17462  
 AC17540  
 AC17541  
 AC17542  
 AC17543

\* This item is not included in the 84201 code.

### Intended use:

Immunofluorescence microscope for capturing images of indirect immunofluorescence (IIF) assay slides. For professional use in the clinical laboratory only.



---

**Microscope optical system**


---

Head	Trinocular
Eyepieces	EWF 10 x 22 mm
Objectives	Plan objectives 10x/0.25, 20x/0.40 and 40x/0.65
Optics	Infinity-corrected

---

**Microscope bright field**


---

Illumination	NeoLED 3 W
Power supply	AC 100 - 240 V - 50 Hz

---

**Microscope storage**


---

Environmental temperature	5 - 40 °C
Maximum humidity	80 %

---

**Module illumination systems**


---

Epifluorescence illumination	High power (3 W), blue LED (470 - 480 nm)
Fluorescence filters	Suitable for fluorescein isothiocyanate (FITC)

---

**Module power requirements**


---

Power adapter	7.5 V 800 mA
Input voltage	100 - 240 VAC, 50/60 Hz

---

**Module storage**


---

Environmental temperature	10 °C - 35 °C
Maximum humidity	< 75 %
Dimensions	102 mm (W) x 123 mm (L) x 67 mm (H)
Weight	Approx. 0.980 kg

---

**Camera picture**


---

Number of pixels	6.3 MP
Sensor	sCMOS SONY Exmor R
Sensor size	1/1.8"
Pixel size	2.5 x 2.5
Resolution	3072 x 2048
Exhibition time	0.244 - 15000 ms
Frames per second (max)	30 Fps

---

**Camera software**


---

Connection	High speed USB 3.0 connection
Program	Image Focus Alpha
Compatibility	Windows 7/8/10

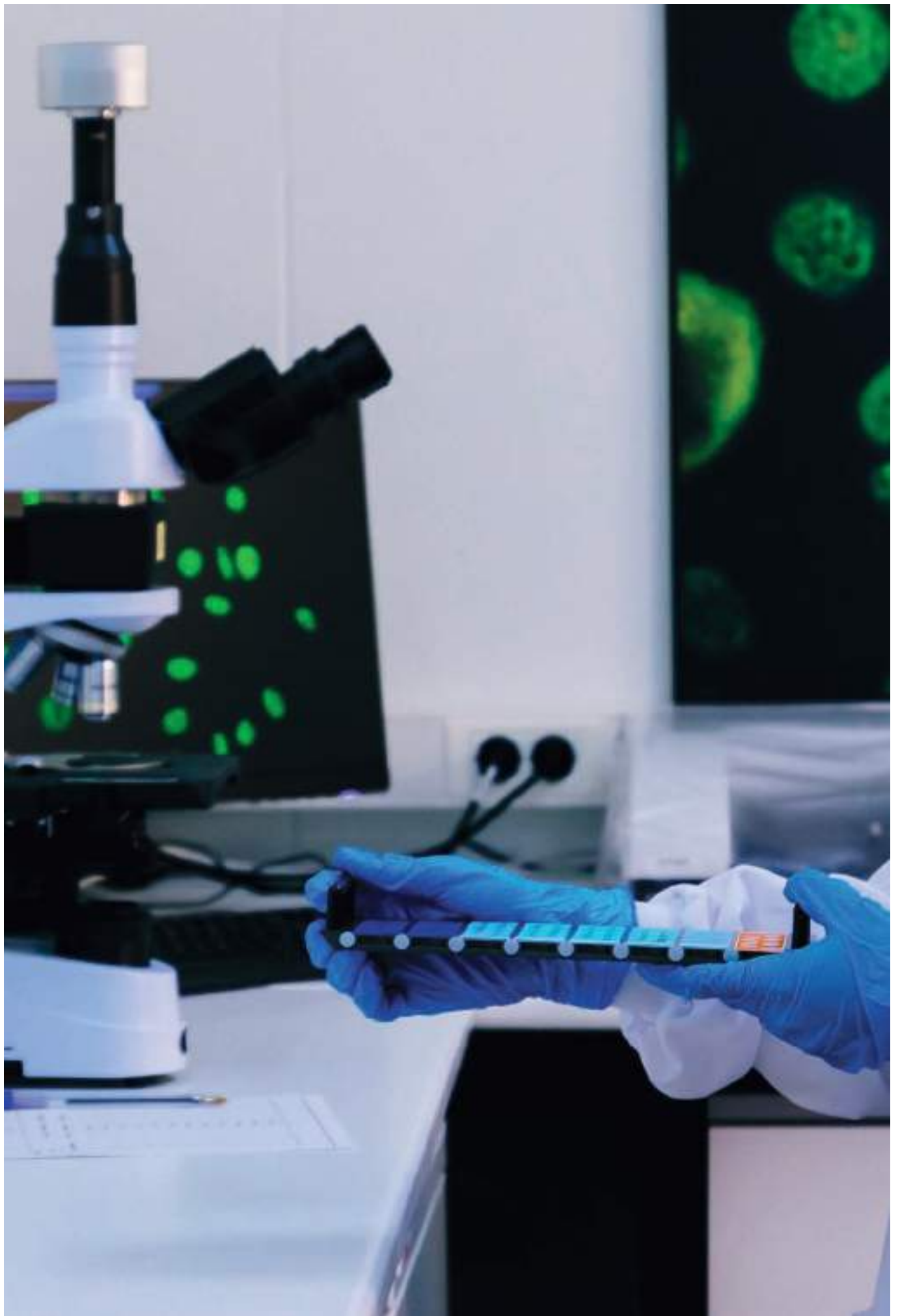
---

**Camera storage**


---

Environmental temperature	Minus 10 - 50 °C
Humidity	30 - 80 %

---





# Reagents

Code	Quantity	Description
<b>ANTI-NUCLEAR ANTIBODIES HEp-2 (ANA-HEp-2)</b>		
		<b>HEp-2 cells</b>
44108	24 tests	Complete kit, 6 wells
44508	60 tests	Complete kit, 6 wells
44509	120 tests	Complete kit, 12 wells
44546	10 slides	Slide box, 6 wells
44547	10 slides	Slide box, 12 wells
<b>ANTI-nDNA ANTIBODIES (nDNA)</b>		
		<b>Crithidia luciliae</b>
44825	24 tests	Complete kit, 6 wells
44818	60 tests	Complete kit, 6 wells
44817	120 tests	Complete kit, 12 wells
44820	10 slides	Slide box, 6 wells
44819	10 slides	Slide box, 12 wells
<b>ANTI-NEUTROPHIL CYTOPLASMIC ANTIBODIES (ANCA)</b>		
		<b>Ethanol fixed ANCA</b>
44850	24 tests	Complete kit, 6 wells
44851	60 tests	Complete kit, 6 wells
44852	10 slides	Slide box, 6 wells
		<b>Formalin fixed ANCA</b>
44878	10 slides	Slide box, 6 wells
44898	60 tests	Complete kit, 6 wells
<b>ANTI-ENDOMYSIUM ANTIBODIES (AEA)</b>		
		<b>Monkey Esophagus (Endomysium)</b>
44548	48 tests	Complete kit, 4 wells
44715	96 tests	Complete kit, 8 wells
44557	12 slides	Slide box, 4 wells
44710	12 slides	Slide box, 8 wells
<b>AUTOANTIBODIES RL/RK/RS (ANA-AMA-ASMA-APCA-LKM)</b>		
		<b>Rat Liver/Kidney/Stomach</b>
44558	48 tests	Complete kit, 4 wells
44648	96 tests	Complete kit, 8 wells
44570	12 slides	Slide box, 4 wells
44639	12 slides	Slide box, 8 wells
<b>AUTOANTIBODIES MsL/MsK/MsS (ANA-AMA-ASMA-APCA-LKM)</b>		
		<b>Mouse Liver/Kidney/Stomach</b>
44826	12 slides	Slide box, 4 wells
44827	12 slides	Slide box, 8 wells
<b>GLOMERULAR BASEMENT MEMBRANE ANTIBODIES (GBMA)</b>		
		<b>Monkey Kidney</b>
44588	12 slides	Slide box, 4 wells
<b>ANTI-ADRENAL CORTEX ANTIBODIES (AACA)</b>		
		<b>Monkey Adrenal</b>
44575	48 tests	Complete kit, 4 wells
44574	12 slides	Slide box, 4 wells

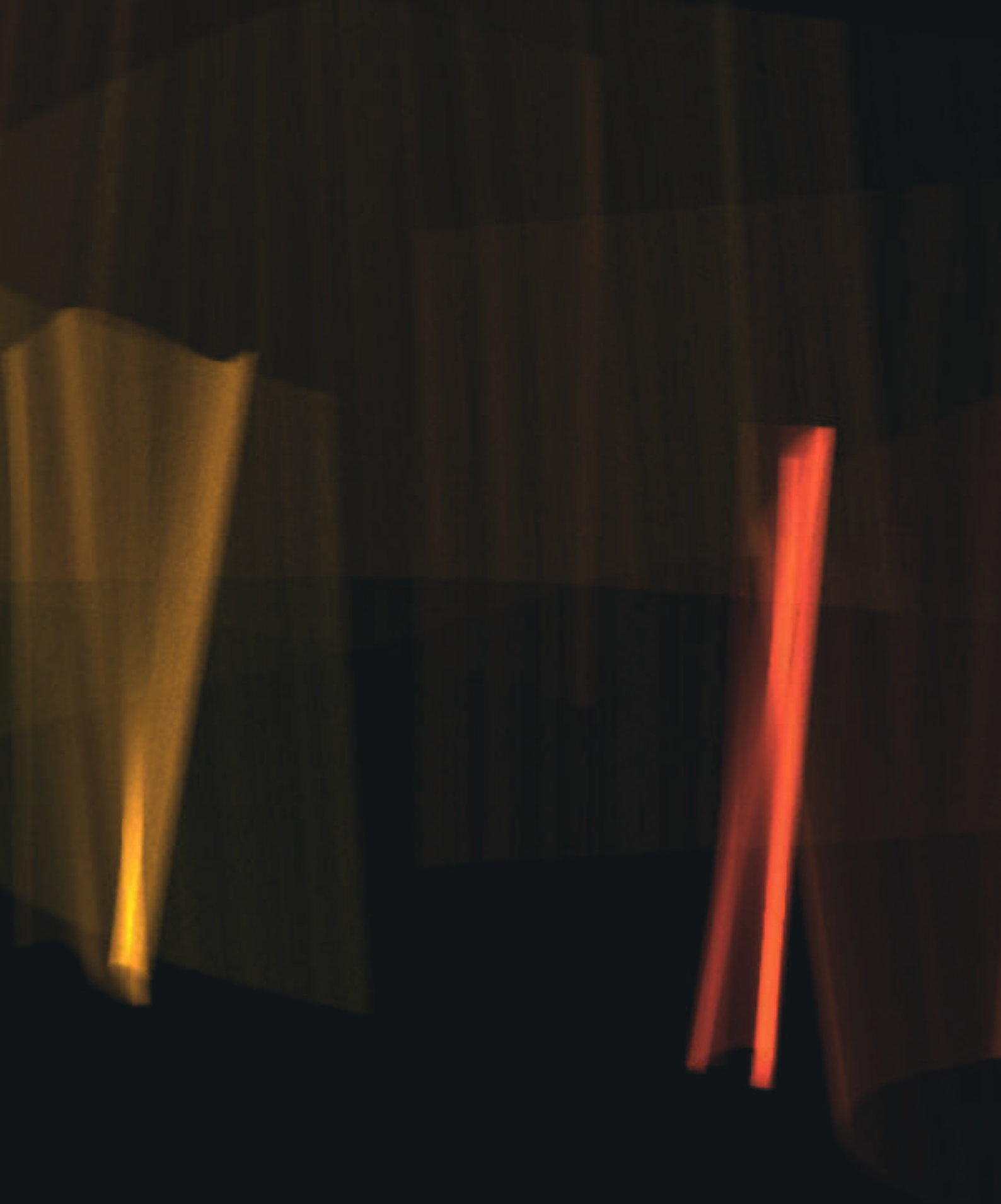
Code	Quantity	Description
<b>ANTI-STRIATED MUSCLE ANTIBODIES (AStMA)</b>		
44649	12 slides	<b>Rat Striated Muscle</b> Slide box, 4 wells
<b>ANTI-ISLET CELL ANTIBODIES (AICA)</b>		
44609	48 tests	<b>Monkey Pancreas</b> Complete kit, 4 wells
44572	12 slides	Slide box, 4 wells
<b>ANTI-THYROID ANTIBODIES (ATA)</b>		
44550	48 tests	<b>Monkey Thyroid</b> Complete kit, 4 wells
44551	12 slides	Slide box, 4 wells
<b>ANTI-SKIN ANTIBODIES (ASA)</b>		
44560	48 tests	<b>Monkey Esophagus</b> Complete kit, 4 wells
44561	12 slides	Slide box, 4 wells
<b>ANTI-KERATIN ANTIBODIES (AKA)</b>		
44618	48 tests	<b>Rat Esophagus</b> Complete kit, 4 wells
44517	12 slides	Slide box, 4 wells
<b>AUTOANTIBODIES DUO</b>		
44874	60 tests	<b>HEp-2/Monkey Liver</b> Slide box, 6 wells

# Controls

Code	Quantity	Description
44889	2.0 mL	Negative Control
44890	2.0 mL	Anti-Nuclear Antibodies-Homogeneous Positive Control
44893	2.0 mL	Anti-Endomysium Antibodies IgA Positive Control
44891	2.0 mL	Anti-Mitochondrial Antibodies Positive Control
44892	2.0 mL	Anti-Smooth Muscle Antibodies Positive Control
44894	2.0 mL	Anti-nDNA Antibodies Positive Control
44912	2.0 mL	C-ANCA Positive Control
44913	2.0 mL	P-ANCA Positive Control

# Conjugates

Code	Quantity	Description
<b>For Monkey tissues</b>		
<b>IgG FITC/Evans (M)</b>		
44847	3.5 mL	Anti-(Monkey adsorbed) IgG FITC conjugate, contains Evans Blue.
44882	10 mL	For use with GBMA, AICA, ATA, ASA and AACA.
<b>IgG FITC/Evans (M) hs</b>		
44914	3.5 mL	High sensitive Anti-(Monkey absorbed) IgG FITC conjugate, contains Evans Blue.
44915	10 mL	For use with AEA.
<b>IgA FITC/Evans</b>		
44692	3.5 mL	Anti-IgA FITC conjugate, contains Evans Blue.
44835	10 mL	For use with AEA.
<b>For Rat and Mouse tissues</b>		
<b>FITC/Evans (R)</b>		
44590	3.5 mL	Anti-(Rat adsorbed) IgG, IgA, IgM FITC Conjugate, contains Evans Blue.
44836	10 mL	For use with ANA, AMA, ASMA, APCA and LKM.
<b>For HEp-2, nDNA , ANCA and Rat and Mouse tissues</b>		
<b>IgG FITC/Evans</b>		
44697	3 mL	Anti-IgG FITC conjugate, contains Evans Blue.
44834	10 mL	For use with HEp-2, nDNA, ANCA, AStMA, AKA, ANA, AMA, ASMA, APCA and LKM.
<b>Auxiliary Reagents</b>		
<b>Miscellaneous</b>		
44592	100 mL	PBS (10x)
44962	500 mL	PBS (10x)
44694	3 mL	Mounting medium
44846	10 mL	Glycin (for GBMA)
44897	100 u.	Coverslips (24 x 60 mm)



**BioSystems S.A.**  
Costa Brava 30, 08030 Barcelona (Spain)  
t. +34 933 110 000  
[www.biosystems.global](http://www.biosystems.global)



Management  
System  
ISO 9001:2015

[www.tuv.com](http://www.tuv.com)  
ID 0091006696